

P15 **Fabrication of Micro-Lens Array with Fast Switching Characteristics using Ferroelectric Liquid Crystals**

Yoonseuk Choi, Yong-Woon Lim*, Jae-Hoon Kim¹, and Sin-Doo Lee

School of Electrical Engineering #32, Seoul National University,
Kwanak P.O.Box 34, Seoul, 151-600, Korea

¹Division of Electrical and Computer Engineering, Hanyang University,
Seoul 133-791, Korea

We demonstrated a fast switching microlens array using the polymer surface relief structure and ferroelectric liquid crystals (FLCs). The planar configuration of FLC layer was established on the lens-shaped surface relief structure between two ITO (Indium Tin Oxide) glass substrates. The single step UV exposure forms surface groove of UV curable polymer with great simplicity and high variety. Due to the spontaneous polarization of FLCs, the response time is found to be a few hundred microseconds that is about a few hundred times faster than that in the conventional one.

1. Introduction

Recent advances in optoelectronic technologies require more functional photonic devices with high performances. A microlens array is currently one of the most promising devices for its versatile usage such as a photonic switching component in optical communication systems and an essential device for future three-dimensional displays [1-4]. It has been previously reported that a nematic liquid crystal (NLC) can be used as an active layer to have tunable refractive index for a microlens array [5]. Although the NLC-based microlens array has some useful characteristics such as good focusing properties and relatively wide variations of the focal length, the slow response resulting from the intrinsic nature of the collective molecular rotation of the NLC limits fast photonic applications. Thus, some previous work was performed to by adopting new material capable of fast switching for the active layer to be suitable for fast switching devices [6].

In this work, we examine fast switching characteristics of the microlens array using a ferroelectric liquid crystal (FLC) layer. This structure has FLC layer as an active material on the pre-processed surface-relief structure of a UV curable polymer. In this configuration, a direct coupling of the spontaneous polarization of the FLC leads to fast switching characteristics of the microlens array device. Moreover, the well-defined

surface-relief structure of the UV curable polymer provides for good focusing characteristics with simple fabrication process of the device.

2. Device Configuration of a Switchable FLC Microlens Array

Our refractive-type FLC microlens array is produced on a periodic array of surface-relief structures that behaves as micro concave lenses with fixed curvature as shown in Fig. 1. The FLC material, capable of fast switching, was inserted into a sandwiched cell whose inner surfaces were treated with an aligning polymer for planar alignment. In fact, the FLC filled in the concave cavities provides electrically focusing properties in the uniform background. We now describe qualitatively the operation principle of the FLC microlens array shown in Fig. 1. Considering that the bottom substrate with the surface-relief structures of the UV polymer is electrically grounded, the microlens can be switched from one state (focused) to the other (defocused) above a certain electric field in the bipolar driving scheme. Under a negative unipolar pulse, the electric field direction is upward. This case is defined as the "field up" state and the other case as the "field down" state as shown in Fig. 1. If the incident light polarized along the molecular director in Fig. 1(a) passes through the FLC microlens, it experiences the extraordinary refractive index of the FLC layer.

The incident light will be focused after passing the FLC microlens due to the difference in the refractive indices of the UV polymer and the FLC layer. As the refractive index difference becomes large, the focal length of the FLC microlens becomes short. As shown in Fig. 1(b), the focusing effect disappears in the “field down” state and the defocused state is obtained. Moreover, the focal length of the FLC microlens can be controlled by the amount of the molecular rotation by means of the electric field. This provides the degree of the tuning capability of the FLC microlens device with fast response.

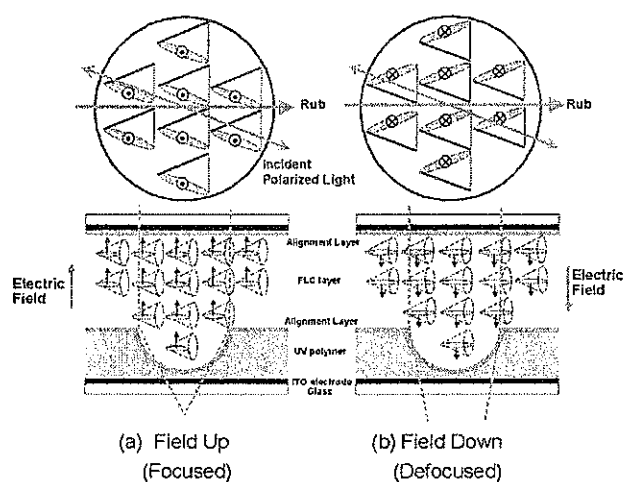


Figure 1. Device configuration of the FLC microlens: (a) the “field up” state represents a focused state and (b) the “field down” state represents a defocused state. The upper and lower diagrams represent the top view and the side view of the FLC microlens, respectively. Dots and crosses in the molecules denote the directions of dipole moments. Small arrows in the side view of the FLC microlens denote the directions of dipole moments.

3. Experimental Method

For fabricating the FLC cell with a microlens array, a periodic array of the surface-relief structures of the UV curable polymer was prepared on the top of the indium-tin-oxide (ITO) coated glass substrates. The UV curable polymer layer was first spin coated on the ITO glass substrate and the spatially modulated UV light was then irradiated onto the polymer layer through a photomask with an array of periodic holes. A commercial UV curable polymer, NOA 65 of Norland Co. was used. The refractive index of the UV polymer is 1.524.

During the UV exposure, the diffusion of monomers in the polymer layer creates the surface-relief structures of the microlens array as reported previously [7-8].

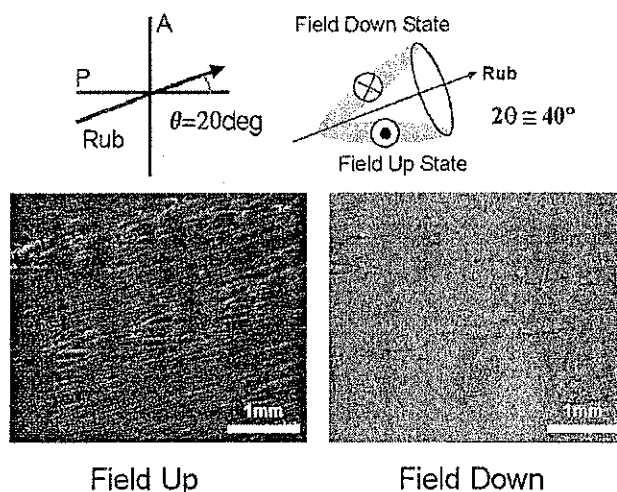


Figure 2. Microscopic textures under crossed polarizers corresponding to the “field up” and the “field down” states at $E = 5\text{V/mm}$. The polarization of the incident light was rotated by $q = -20^\circ$ with respect to the rubbing direction. The molecular director in the “field up” state coincides with the polarizer.

The thickness of the UV polymer film was about $4\ \mu\text{m}$ at the spinning rate of 4000 rpm for 30 seconds. The depth and the radius of the concave surface-relief structure were found to be about $9\ \mu\text{m}$ and $200\ \mu\text{m}$, respectively.

The aligning agent of AL1051, commercially available from Japan Synthetic Rubber Co., was coated onto two glass substrates of the sample cell. The aligning polymer was rubbed unidirectionally to promote planar alignment. The FLC sample cell was assembled in a way such that two rubbing directions defined on the substrates are antiparallel. The FLC material of Felix 15-100 of Clariant Co. (crystal ? the smectic C^* phase at -12°C , the smectic C^* phase ? the smectic A phase at 72°C) was injected into the sandwiched cell in the isotropic state above the clearing temperature of 86°C . The cell gap from the edge of the surface-relief structure was maintained with glass spacers of 10mm thick. The cone angle q of the FLC is 20° at room temperature. The extraordinary and the ordinary refractive indices of Felix 15-100 are 1.664 and 1.490, respectively.

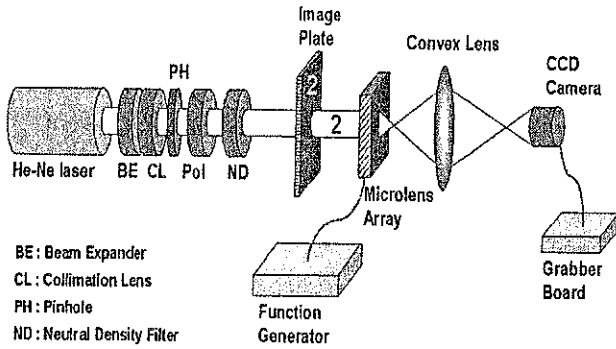


Figure 3. An optical setup for measuring the focused image of the input through the FLC microlens device. The grabbed image was analyzed with a computer processing system. A He-Ne laser with the wavelength of 543.5nm was used as a light source.

4. Result and Discussion

Microscopic textures of the FLC microlens array were first examined to confirm the applicability of the bipolar driving scheme for focusing and defocusing the incident light in the presence of an external electric field E . As shown in Fig. 2, the "field up" state becomes dark at $E = 5V/\mu\text{m}$ above a certain saturation field when the rubbing direction makes the angle of 20° to one of the crossed polarizers. In this case, the angle between the rubbing direction and the polarizer is exactly same as the cone angle of the FLC, meaning that the molecular director coincides with the polarizer. In the "field down" state, however, the molecular director makes $2\theta = 40^\circ$ to the polarizer so that the "field down" state becomes leaky.

In the light of the above concept, we now discuss the focusing properties of the FLC microlens device in the presence of a switching electric field. A simple optical setup for measuring the focused image of the input through the FLC microlens device is illustrated in Fig. 3. A He-Ne laser with the wavelength of 543.5 nm was used as a light source. An image plate with Arabian number 2 was used as an input to observe the focusing effect of the FLC microlens under the electric field $E = 5V/\mu\text{m}$. In two switching configurations, I and II, the focusing characteristics of our FLC microlens device were shown in Fig. 4. The "field up" state and the "field down" state are interchangeable when the polarization of the incident light rotates oppositely by $\theta = 20^\circ$ with respect to the rubbing direction. Two configurations, I and II, correspond to $\theta = -20^\circ$ and $\theta = +20^\circ$, respectively. As

discussed above, the focusing effect arises mainly from the refractive index difference between the UV polymer and the FLC when the incident polarization coincides with the molecular director in the presence of the electric field. Note that the focusing and defocusing characteristics in Fig. 4(a) were obtained in the device geometry of Fig. 1. Depending on the configuration of the rubbing direction, the electric field direction, and the polarization state of the incident light, different focusing and defocusing effects can be produced.

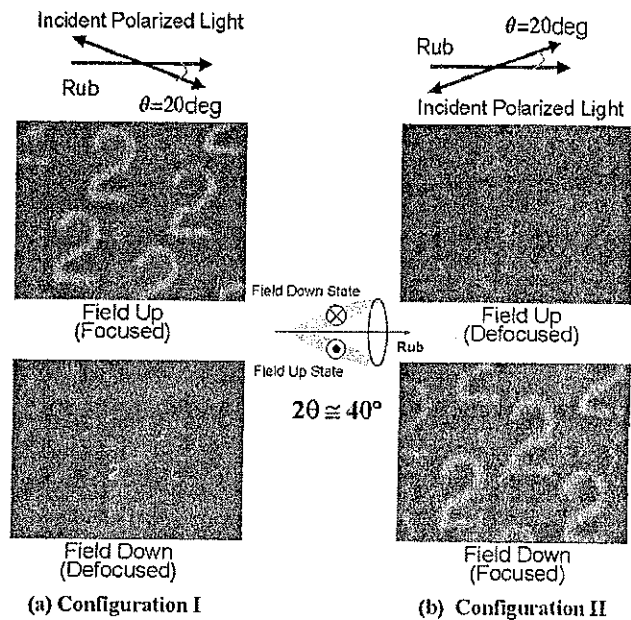


Figure 4. The focusing characteristics of the FLC microlens array device at $E = 5V/\mu\text{m}$. The "field up" state and the "field down" state are interchangeable when the polarization of the incident light rotates oppositely by $\theta = 20^\circ$ with respect to the rubbing direction.

In Fig. 5, the switching characteristics of our FLC microlens device were shown as a function of the electric field when the "field up" state was switched into the "field down" state and vice versa. Two response times τ_{\pm} follow a form of $(E - E_s)^{-1}$ where E_s is a certain bias field related to the surface field. This is a typical behavior of the ferroelectric switching in the FLC system. One point is that $E_s = 0$ for τ_+ and $E_s = 3 V/\mu\text{m}$ for τ_- . The response time of the FLC microlens was found to be a few hundred microseconds. At a relatively high field of $E_s = 10 V/\mu\text{m}$, the response time $\tau_+ = 170 \mu\text{sec}$ and $\tau_- = 140 \mu\text{sec}$.

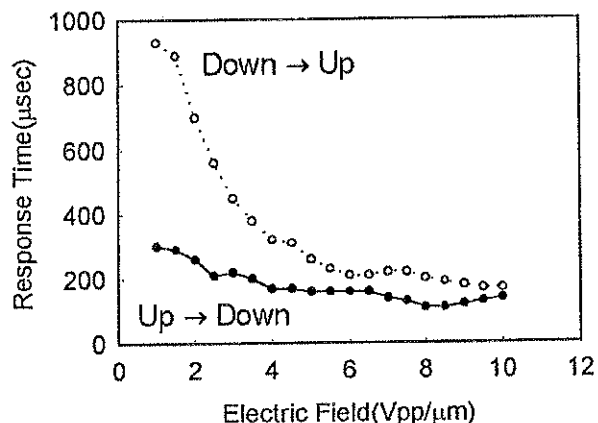


Figure 5. The response time of the FLC microlens array device as a function of the electric field. Open circles and filled circles correspond to the switching from the “field down” to the “field up” state and that from the “field up” to the “field down” state, respectively.

5. Concluding Remarks

We demonstrated a fast switching FLC microlens device fabricated on an array of the surface-relief structures of the UV curable polymer. The focusing and defocusing effects were well controlled by the application of an external electric field. The switching time of the FLC microlens device was found to be a few hundred microseconds. The surface-relief structures of the UV curable polymer allows for inexpensive and easy fabrication of the FLC microlens array. The FLC microlens array

device presented here would be suitable for future photonic switching systems and 3-dimensional displays.

Acknowledgement

This work is supported in part by Center for Electro- and Photo-Responsive Molecules through Korea University.

References

- [1] M. Firtze, M. B. Stern, and P. W. Wyatt, 1998, *Opt. Lett.*, **23**, 141.
- [2] H. J. Tiziani, M. Wegner, and D. Steudle, 2000, *Opt. Eng.*, **39**, 32.
- [3] L. G. Commander, S. E. Day, and D. R. Selviah, 2000, *Opt. Commun.*, **177**, 157.
- [4] S. Suyama, M. Date, and H. Takada, 2000, *Jpn. J. Appl. Phys.*, **39**, 480.
- [5] Y. Choi, J. -H. Park, J. -H. Kim, and S. -D. Lee, 2002, *Opt. Mater.*, **21**, 643.
- [6] Y. Choi, C. -J. Yu, J. -H. Kim, and S. -D. Lee, *Ferroelectrics*, to be published.
- [7] S. Piazzolla, and B. K. Jenkins, 1999, *J. of Mod. Opt.*, **46**, 2079.
- [8] T. Qian, J. -H. Kim, S. Kumar, and P. L. Taylor, 2000, *Phys. Rev. E*, **61**, 4007.

Proceedings of the 7th

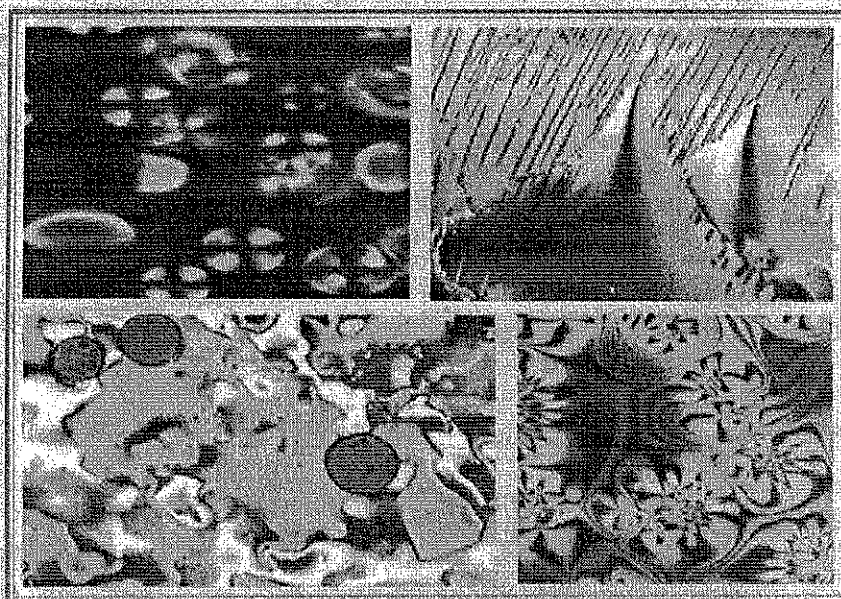
KIAS
THE KOREAN
INFORMATION
DISPLAY
SOCIETY

KLCC '04

KOREA LIQUID CRYSTAL CONFERENCE

Chonbuk National University, Chonju, Korea

July 13 - 16, 2004



Organized by

Basic Science Research Center at Korea University

Korean Liquid Crystal Association

Liquid Crystal Research Center at KonKuk University

P7. The effect of photoinitiator/coinitiator combinations on the optical properties and photoreaction of HPDLC	95
<i>Do Kyun Kim, Ju Yeon Woo and Byung Kyu Kim, Pusan National University</i>	
P8. Performance and morphology of holographic transmission PDLC based on thiol-pua polymerization	99
<i>Eun Hee Kim, Ju Yeon Woo, Byung Kyu Kim, Pusan National University</i>	
P9. Synthesis of New Achiral Liquid Crystals with Bisalkoxy Swallow-Tails and Their Potential Application in Antiferroelectric Mixtures	103
<i>Kyung-Tae Kang[*], Jeong Tak Kim, Jeong Haeng Heo, Won Jon Kim, Jong Gun Lee, And Yong Bae Kim⁺, Pusan National University, Konkuk University</i>	
P10. Electro-optic properties of transmission HPDLC with high dielectric anisotropy compound	113
<i>Ju Yeon Woo, Eun Hee Kim, Byung Kyu Kim, Pusan National University</i>	
P11. Effect of lc-polymer miscibility on phase separation in HPDLC	117
<i>Ju Ai Jung, Eun Hee Kim and Byung Kyu Kim, Pusan National University</i>	
P12. Beam-Shifting Device using a Vertically Aligned Configuration of a Ferroelectric Liquid Crystal with Surface Relief Gratings	121
<i>Chang-Jae Yu, Yoonseuk Choi, and Sin-Doo Lee, Seoul National University</i>	
P13. In-plane Modulation of Molecular Reorientation in Highly Twisted Nematic Liquid Crystal Devices	125
<i>Chang-Jae Yu, Cherlhyun Jeong, Sunkwang Hong¹, and Sin-Doo Lee, Seoul National University, Samsung Electronics</i>	
P14. Field Induced-Layer Reorientation of a Ferroelectric Liquid Crystal with a Short Helical Pitch	129
<i>Chang-Jae Yu and Sin-Doo Lee, Seoul National University</i>	
P15. Fabrication of Micro Lens Array with Fast Switching Characteristics using Ferroelectric Liquid Crystals	133
<i>Yoonseuk Choi, Yong-Woon Lim, Jae-Hoon Kim[*] and Sin-Doo Lee, Seoul National University, [*]Hanyang University</i>	
P16. Study on phase transition of the optically compensated splay (OCS) cell	137
<i>Seung Jai Kim, Sang Min Oh, John Moon Rhee, Jeong-Heon Hwang[*], Dae-Shik Seo[*] and Seung Hee Lee, Chonbuk National University, [*]Yonsei University</i>	
P17. Study on the Locked Super Homeotropic (LSH) Liquid Crystal Mode for Large Size LCD with Excellent Wide Viewing Angle characteristics	141
<i>Sang Hyun Park, Il Sub Song, Wan Chol Kim, Sae Tae Oh, and Seung. Hee Lee, Chonbuk National University.</i>	